

- **Designed for European 868.35 MHz SRD Transmitters**
- **Very Low Series Resistance**
- **Quartz Stability**
- **Surface-mount Ceramic Case**
- **Complies with Directive 2002/95/EC (RoHS)**
- **Tape and Reel Standard per ANSI/EIA-481**
- **Moisture Sensitivity Level: 1**
- **AEC-Q200 Qualified**

The RO3164A -1 is a one-port surface-acoustic-wave (SAW) resonator packaged in a surface-mount ceramic case. It provides reliable, fundamental-mode quartz frequency stabilization of fixed-frequency transmitters operating at 868.35 MHz. The RO3164A is designed specifically for remote control and wireless security SRD transmitters operating under ETSI EN 300 220-2.

Absolute Maximum Ratings

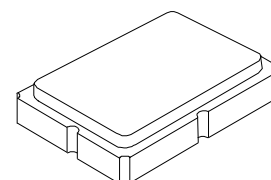
Rating	Value	Units
CW RF Power Dissipation	+5	dBm
DC Voltage Between Terminals	±30	VDC
Case Temperature	-40 to +85	°C
Soldering Temperature, 10 seconds / 5 cycles maximum	260	°C

Electrical Characteristics

Characteristic	Sym	Notes	Minimum	Typical		Units
Frequency, +25 °C	f_C		868.200		868.500	MHz
Tolerance from 868.35 MHz	Δf_C				±150	kHz
Insertion Loss	IL			1.3	2.0	dB
Quality Factor	Unloaded Q Q_U 50 Ω Loaded Q Q_L			6600		
				800		
Temperature Stability	Turnover Temperature T_O		10	25	40	°C
	Turnover Frequency f_O			f_C		kHz
	Frequency Temperature Coefficient FTC			0.032		ppm/°C ²
Frequency Aging	Absolute Value during the First Year $ f_A $			<±10		ppm/yr
DC Insulation Resistance between Any Two Terminals			1.0			M Ω
RF Equivalent RLC Model	Motional Resistance R_M			13.8		Ω
	Motional Inductance L_M			16.8		μ H
	Motional Capacitance C_M			2.0		fF
	Shunt Static Capacitance C_O			1.8		pF
Test Fixture Shunt Inductance	L_{TEST}			18.3		nH
Lid Symbolization (YY = Year, WW = Week, S = Shift)	780, <u>YYWW</u> S					

RO3164A-1

**868.35 MHz
SAW Resonator**



SM5035-4



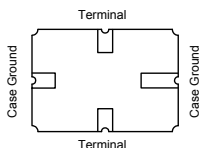
CAUTION: Electrostatic Sensitive Device. Observe precautions for handling.

NOTES:

1. The design, manufacturing process, and specifications of this device are subject to change.
2. US or International patents may apply.
3. RoHS compliant from the first date of manufacture.

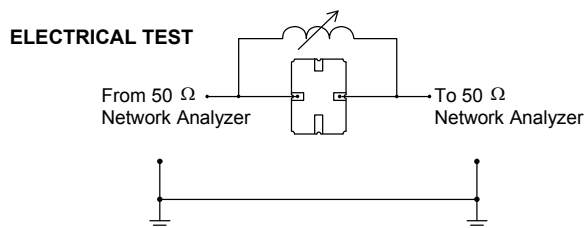
Electrical Connections

The SAW resonator is bidirectional and may be installed with either orientation. The two terminals are interchangeable and unnumbered. The callout NC indicates no internal connection. The NC pads assist with mechanical positioning and stability. External grounding of the NC pads is recommended to help reduce parasitic capacitance in the circuit.

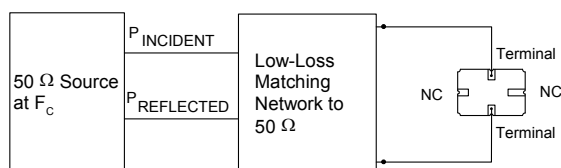


Typical Test Circuit

The test circuit inductor, L_{TEST} , is tuned to resonate with the static capacitance, C_0 , at F_C .



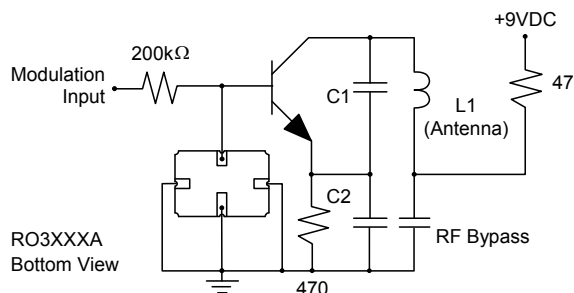
POWER TEST



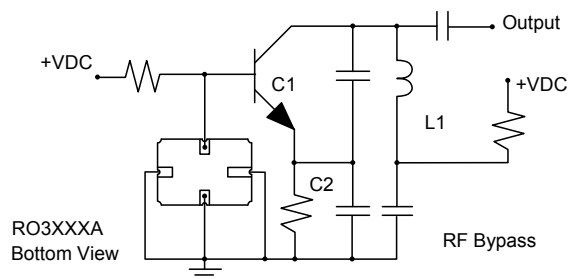
CW RF Power Dissipation = $P_{\text{INCIDENT}} - P_{\text{REFLECTED}}$

Typical Application Circuits

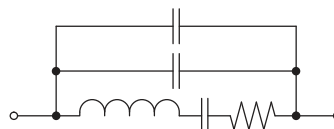
Typical Low-Power Transmitter Application



Typical Local Oscillator Applications

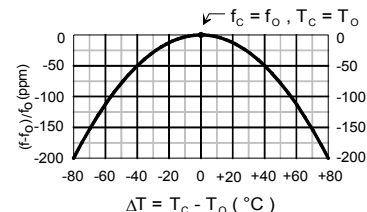


Equivalent RLC Model

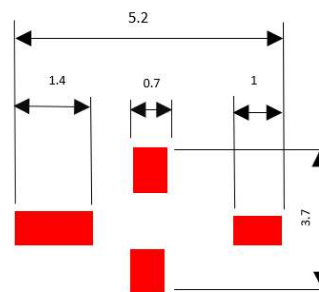
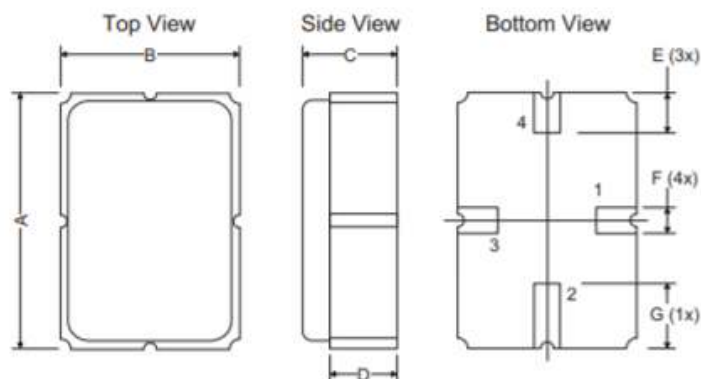


Temperature Characteristics

The curve shown on the right accounts for resonator contribution only and does not include LC component temperature contributions.



Case



PCB Footprint

Dimensions	Millimeters				Inches	
	Min	Nom	Max	Min	Nom	Max
A	4.87	5.00	5.13	0.191	0.196	0.201
B	3.37	3.50	3.63	0.132	0.137	0.142
C	1.45	1.53	1.60	0.057	0.060	0.062
D	1.35	1.43	1.50	0.040	0.057	0.059
E	0.67	0.80	0.93	0.026	0.031	0.036
F	0.37	0.50	0.63	0.014	0.019	0.024
G	1.07	1.20	1.33	0.042	0.047	0.052

Recommended Reflow Profile

1. Preheating shall be fixed at 150~180°C for 60~90 seconds.
2. Ascending time to preheating temperature 150°C shall be 30 seconds min.
3. Heating shall be fixed at 220°C for 50~80 seconds and at 260°C +0/-5°C peak (10 seconds).
4. Time: 5 times maximum.

