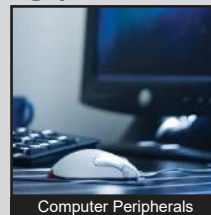


# KAG SERIES DIP SWITCH

ANTI-VANDAL SWITCHES  
 DETECTOR SWITCHES  
 DIP SWITCHES  
 KEYLOCK SWITCHES  
 NAVIGATION SWITCHES  
 PUSHBUTTON SWITCHES  
 ROCKER SWITCHES  
 ROTARY SWITCHES  
 SLIDE SWITCHES  
 SNAP ACTION SWITCHES  
 TACTILE SWITCHES  
 TOGGLE SWITCHES  
 CAP OPTIONS



## APPLICATIONS / MARKETS



**RoHS**

## SPECIFICATIONS

**Electrical Rating:** 100mA @ 50VDC Non-Switching  
 25mA @ 24VDC Switching  
**Life Expectancy:** 1,000 Cycles each circuit  
**Contact Resistance:** 50mΩ Max.  
**Insulation Resistance:** 100 MΩ Min. at 500VDC  
**Dielectric Strength:** 500VAC for 1 min.  
**Operating Temperature:** -40°C to 105°C  
**Storage Temperature:** -40°C to 105°C  
**Travel:** 0.9mm in each direction  
**Contact Arrangement:** SPST each position

## FEATURES & BENEFITS

- Gullwing (SMT) termination option
- Tube or Tape & Reel packaging options
- Top tape seal option with recessed actuator
- Low profile
- 1,2,4,8, or 10 positions
- Gold contacts
- Switches are supplied with all poles in "OFF" position

## PART NUMBER CONFIGURATOR

Series	No. of Positions	Actuator	Termination	Contact Material	Packaging
<input type="text" value="KAG"/>	<input type="text" value="01"/> <input type="text" value="02"/> <input type="text" value="04"/> <input type="text" value="08"/> <input type="text" value="10"/>	<input type="text" value="L"/> <input type="text" value="S"/> <input type="text" value="T"/>	<input type="text" value="G"/>	<input type="text" value="G"/>	<input type="text" value="T"/> <input type="text" value="R"/>
	01 - 1 position 02 - 2 positions 04 - 4 positions 08 - 8 positions 10 - 10 positions	L - Extended S - Recessed without top tape seal T - Recessed with top tape seal	G - Gullwing	G - Gold	T - Tube R - Tape & Reel (Gullwing only)

Specifications subject to change without notice 8.13.2024



**E-SWITCH®**

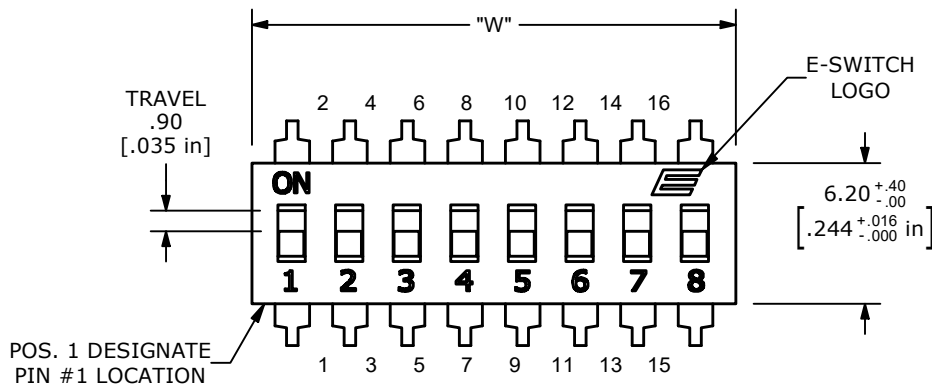
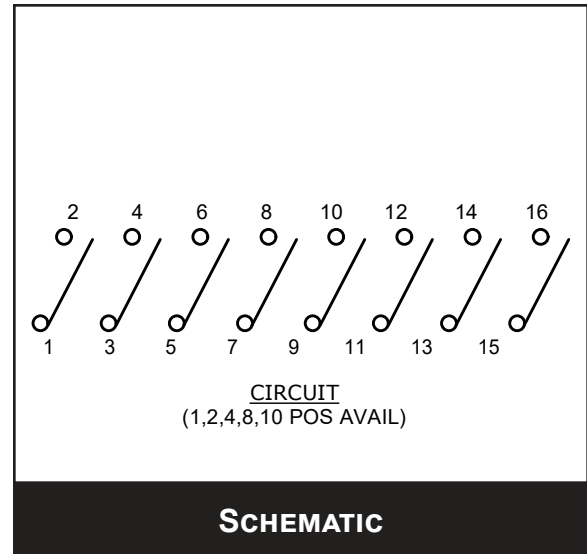
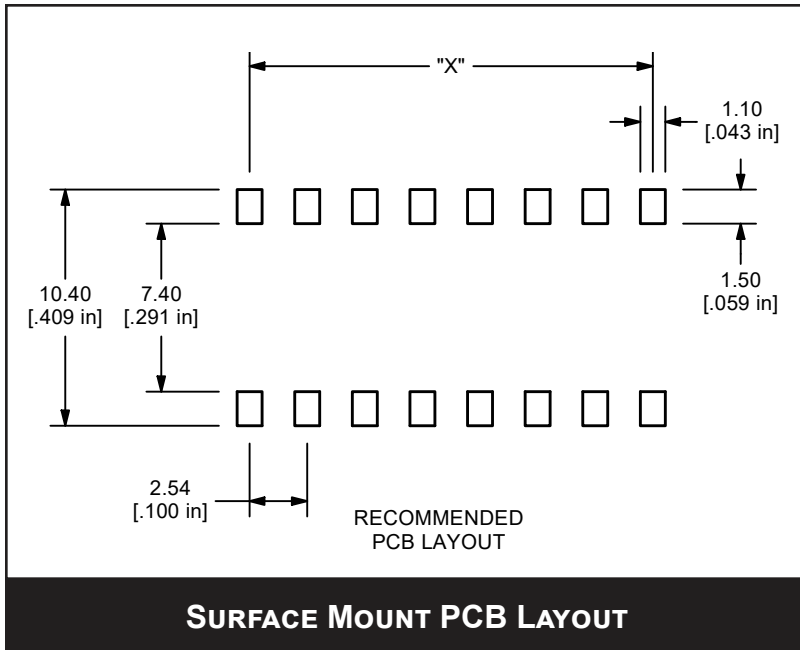
www.e-switch.com

800.867.2717

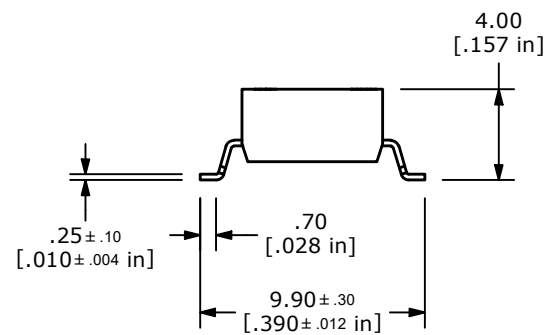
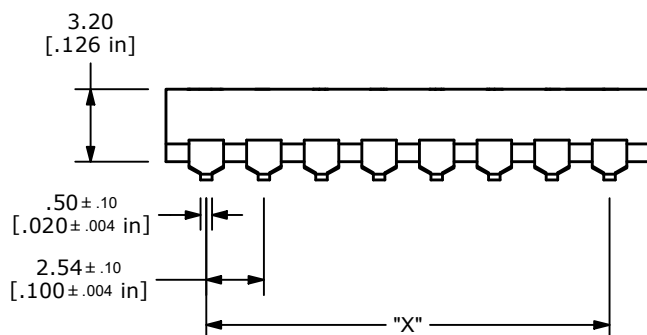
1

# KAG SERIES DIP SWITCH

## BODY DIMENSIONS GULLWING TERMINATION



NO. OF POS	DIM W	DIM X
1	3.54	N/A
2	6.08	2.54
4	11.16	7.62
8	21.32	17.78
10	26.40	22.86



ANTI-VANDAL SWITCHES  
DETECTOR SWITCHES  
DIP SWITCHES  
KEYLOCK SWITCHES  
NAVIGATION SWITCHES  
PUSHBUTTON SWITCHES  
ROCKER SWITCHES  
ROTARY SWITCHES  
SLIDE SWITCHES  
SNAP ACTION SWITCHES  
TACTILE SWITCHES  
TOGGLE SWITCHES  
CAP OPTIONS