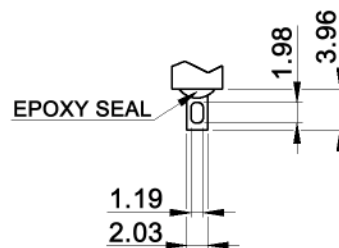
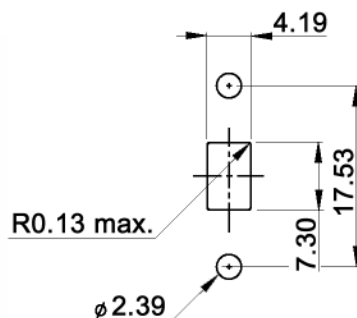


SOLDER LUG



PANEL MOUNTING



SWITCH FUNCTION

Model No.	POS. 1	POS. 2	POS. 3
MFS 126	ON	OFF	ON
Term. Conn.	2-1	OPEN	2-3

SWITCH RATING

code for y	contacts and terminals	rating AC with real load	rating DC with real load
empty	silver-plated	2A/250V, 5A/125V	5A/28V
B	gold-plated	0.4VA/20V	0.4VA/20V
G	gold-plated over silver	2A/250V, 5A/125V	5A/28V

Specifications:

- Contact rating: see table "y"
- Contact resistance: 10mOhm max. at 2-4V DC
- Insulation resistance: 1 000MOhm min.
- Dielectric strength: 1 000V RMS
- Operating temperature: -30°C to +85°C
- Mechanical life: 30 000 make-and-break cycles
- Soldering conditions: manual soldering: 350°C, 5sec. max.
- Material: Case: diallyl phthalate (DAP) (UL94V-0)
Actuator: nylon, black
Housing: stainless steel
Contact / terminals: copper alloy, surface see table "y"

Compliance: RohS III (2015/863/EU)

Tolerances: 0.00: ± 0.25mm 0.0: ± 0.40mm		Date	Name	<h1>MFS 126 Ey</h1>
		07/17	dr	
		knitter-switch		<h2>30 39 07</h2>
Plating	01/24	dr		Page 1/1
Modifications	Date	Name		